

# BROOKTON MEMORIAL HALL CONSERVATION OPTION 1

THE FOCUS FOR THIS OPTION IS THE CONSERVATION OF ALL STAGES OF THE BROOKTON MEMORIAL HALL, INTERNALLY AND EXTERNALLY. CONSERVATION IS GUIDED BY THE POLICIES IN THE CONSERVATION PLAN.

STRUCTURAL AND BUILDING WORKS WILL BE GUIDED BY THE STRUCTURAL REPORT AND THE CONSERVATION PLAN. EXISTING USES ARE RETAINED

TOILETS ARE DESIGNED AND UPGRADED TO MEET COMPLIANCE STANDARDS. THE KITCHEN IS REFURBISHED TO MEET CURRENT COMPLIANCE STANDARDS.

WHITTINGTON STREET IS PROPOSED TO HAVE TRAFFIC CALMING TO INCREASE THE CONNECTIVITY BETWEEN BROOKTON MEMORIAL HALL TO MADDISON SQUARE PARK. THE CONNECTION WITH THE SHIRE ADMINISTRATION OFFICES IS REINFORCED THROUGH A FORMALIZED CROSSING AND TRAFFIC CALMING TO WHITE STREET.

LANDSCAPING TO THE STREET ELEVATIONS IS PROPOSED TO PROVIDE A MORE SYMPATHETIC SETTING FOR THE MEMORIAL HALL.

## CONSERVATION POLICIES

### 1 NEW USES

NEW USES CAN BE INTRODUCED. ANY NEW USE SHOULD NOT RESULT IN HARMFUL ALTERATIONS TO THE BUILDINGS OR LOSS OF ORIGINAL FABRIC.

### 2 RETAIN + CONSERVE

ALL THE BUILDINGS AND SITE FEATURES ASSESSED AS BEING OF HERITAGE SIGNIFICANCE SHOULD BE RETAINED AND CONSERVED ON THEIR ORIGINAL SITE.

### 3 RESPECT ALL PERIODS OF DEVELOPMENT

THE CONTRIBUTIONS OF ALL PERIODS TO THE PLACE MUST BE RESPECTED.

### 4 COMPATIBLE USE

COMPATIBLE USE MAY BE ACCEPTABLE; CAFE/TEA ROOMS; CINEMA; COMMUNITY USE; SMALL BUSINESS INCUBATOR/SMALL OFFICES; LOTTERIES HOUSE; LOCAL MARKETS.

### 5 STREETScape PRESENTATION

STREETScape PRESENTATION IS AN INTEGRAL ASPECT OF THE SIGNIFICANCE OF THE PLACE. THE BUILDING DEMONSTRATES AESTHETIC VALUE IN THE STREETScape.

### 6 VIEWS TO REAR

VIEWS TO THE REAR ARE OF LITTLE IMPORTANCE.

### 7 INTERPRETATION

INTERPRETATION INVOLVES THE WAY IN WHICH THE SIGNIFICANCE IS CONVEYED TO THE USERS OF THE PLACE INCLUDING VISITORS AND THE GENERAL PUBLIC. THE HISTORY OF THE PLACE IN THE CONTEXT OF THE DEVELOPMENT OF THE TOWN OF BROOKTON AND THE USE OF THE BUILDING FOR CIVIC AND SOCIAL PURPOSES ARE IMPORTANT COMPONENTS OF ITS INTERPRETATION.

### 8 CONSERVE FUNDAMENTAL COMPONENTS

ENSURE THE CONSERVATION OF THE BUILDING THAT COMPRISES THE BROOKTON MEMORIAL HALL IS A FUNDAMENTAL COMPONENT OF ITS INTERPRETATION

### 9 ENCOURAGE COMMUNITY USE

FUTURES OWNERS AND USERS SHOULD ENCOURAGE THE CONTINUING USE OF THE PLACE AS A COMMUNITY RESOURCE.

### 10 ENCOURAGE PUBLIC USE

THE CONTINUING USE OF THE HALL FOR PUBLIC PURPOSES IS ENCOURAGED.

### 11 RETAIN + CONSERVE TIMBER FLOORBOARDS

EXISTING TIMBER FLOORBOARDS SHOULD BE RETAINED AND CONSERVED.

### 12 REAR ADDITIONS + ALTERATIONS

DEVELOPMENT TO THE REAR OF THE HALL MAY BE ACCEPTABLE. ALL NEW DEVELOPMENT TO RESPECT THE FORM, SCALE AND PROPORTION OF THE HALL.

### 13 REAR ADDITIONS + ALTERATIONS

OPPORTUNITIES FOR DEVELOPMENT OF THE BROOKTON MEMORIAL HALL DO EXIST. ALTERATION OR ADDITIONS TO THE REAR OF THE HALL MAY BE CONSIDERED. ANY PROPOSALS FOR SUCH WORKS SHOULD REFLECT THE ARCHITECTURAL INTENT OF THE ORIGINAL BUILDING IN TERMS OF SCALE AND FORM. NEW WORKS SHOULD READ AS SUCH. THE NEW WORK SHOULD NOT IMPEDE THE ABILITY OF THE DIFFERENT DEVELOPMENT PHASES OF THE HALL TO BE READ.

### 14 RETAIN + CONSERVE FIREPLACE + STOVE

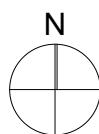
RETAIN AND CONSERVE FIREPLACES AND STOVES

### 15 ENCOURAGE PUBLIC USE OF AGRICULTURAL HALL

PUBLIC USE OF THE ORIGINAL AGRICULTURAL HALL IS ENCOURAGED

### 16 INTERPRETATION ON HISTORY + SIGNIFICANCE

ENCOURAGE THE DEVELOPMENT OF INTERPRETIVE MATERIAL ON THE HISTORY AND SIGNIFICANCE OF THE DEVELOPMENT OF THE BROOKTON MEMORIAL HALL WITHIN THE CONTEXT OF THE HISTORY OF DEVELOPMENT OF BROOKTON



### 17 CONSERVATION IS PART OF INTERPRETATION

IMPORTANT COMPONENT OF THE INTERPRETATION IS THE CONSERVATION OF ALL THE VARIOUS COMPONENTS WHICH CONTRIBUTE TO ITS SIGNIFICANCE. THE RELATIONSHIP BETWEEN THE VARIOUS ELEMENTS WHICH CONTRIBUTE TO THE HIGH AUTHENTICITY OF THE PLACE IS AN IMPORTANT ASPECT.

### 18 RETAIN DOORS + WINDOWS + VENTS

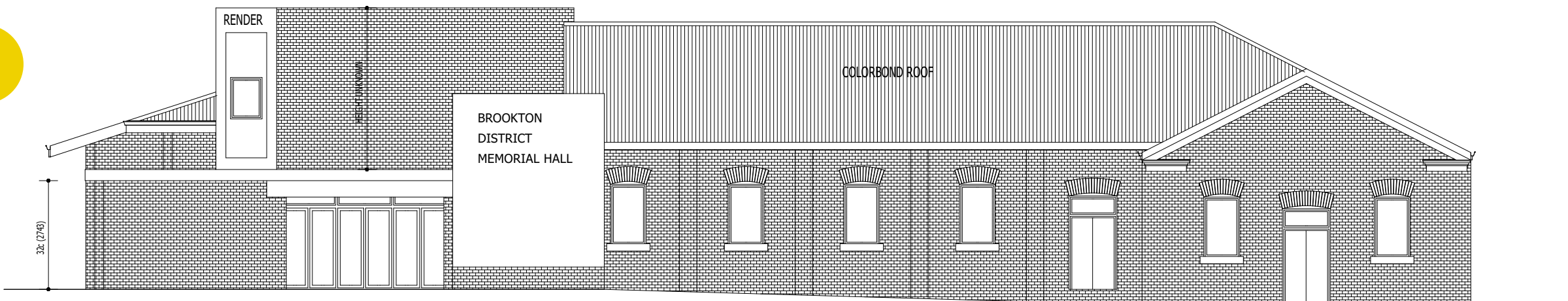
DOORS, WINDOWS AND VENT OPENINGS SHOULD BE RETAINED. NO NEW DOOR OR WINDOW OPENINGS TO BE MADE TO FRONT ELEVATION. JOINERY TO BE RESTORED. REPLACING WINDOWS TO REINSTATE TIMBER FRAMING TO MATCH ORIGINAL DESIGN.

### 19 CONSERVE CHIMNEY

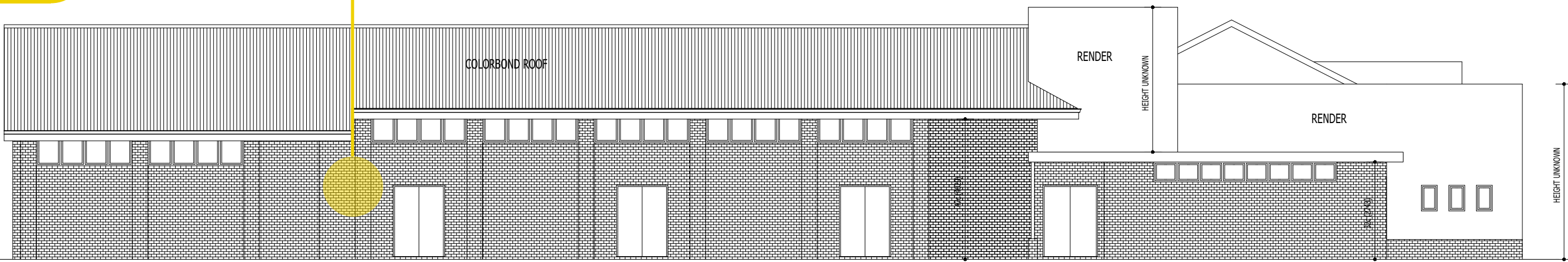
CHIMNEYS TO BE RETAINED AND CONSERVED

### 20 NEW ROOF

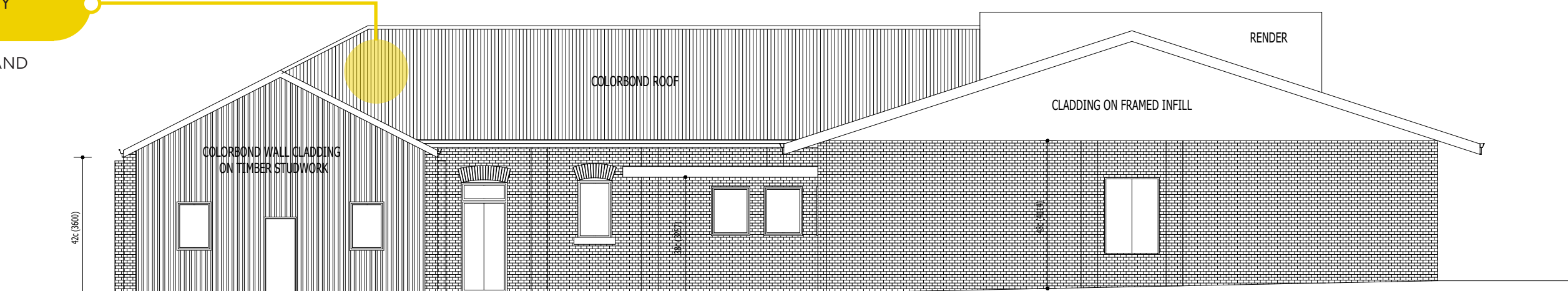
THE EXISTING ROOF TO BE REPLACED WITH SIMILAR CORRUGATED STEEL CLADDING WITH THE SAME PROFILE.



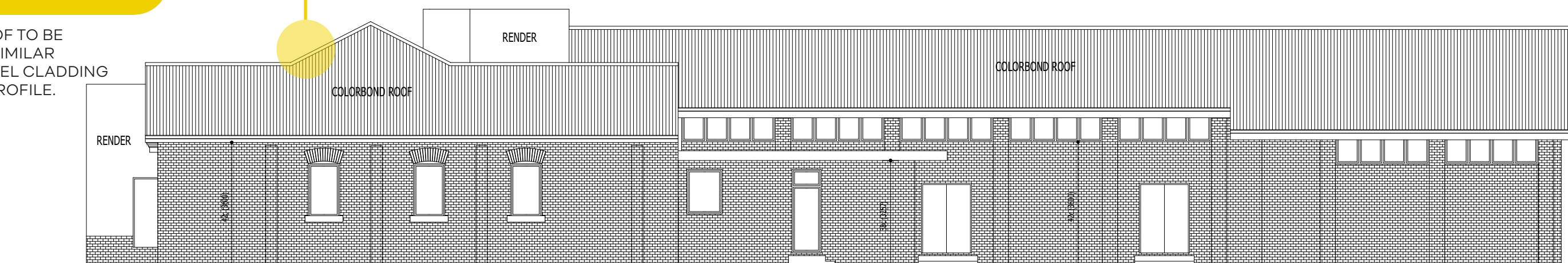
SOUTH



WEST



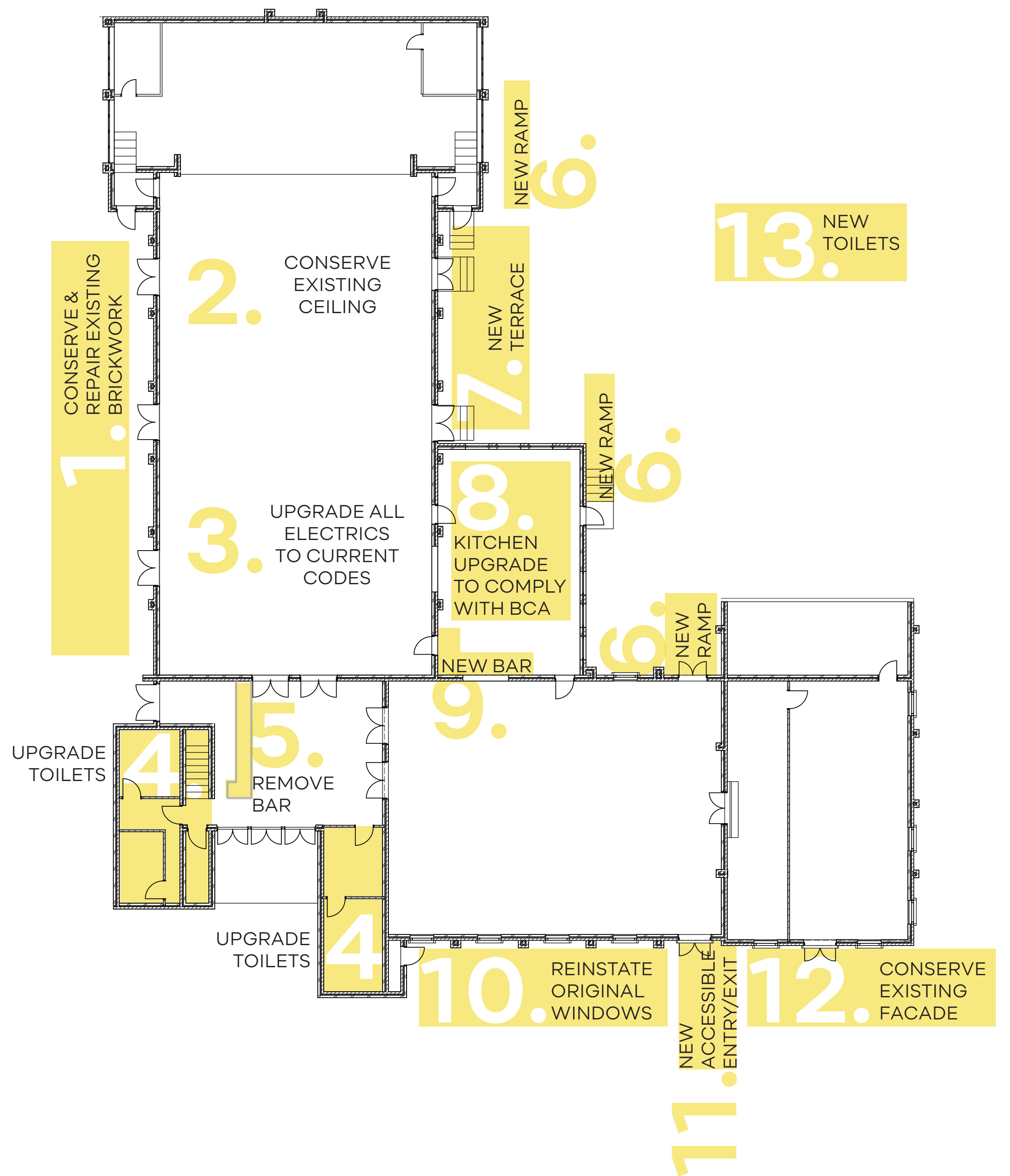
NORTH



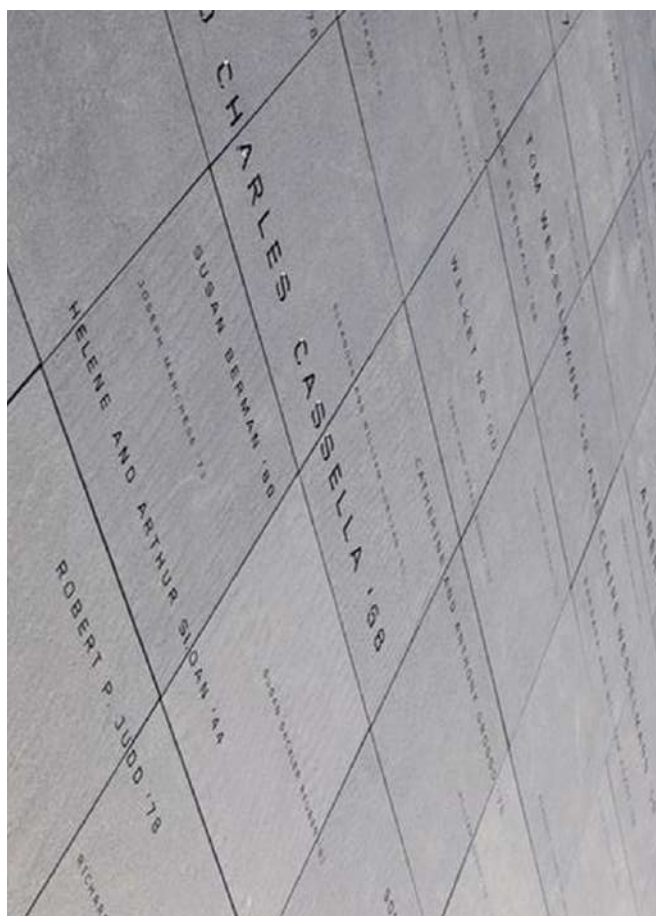
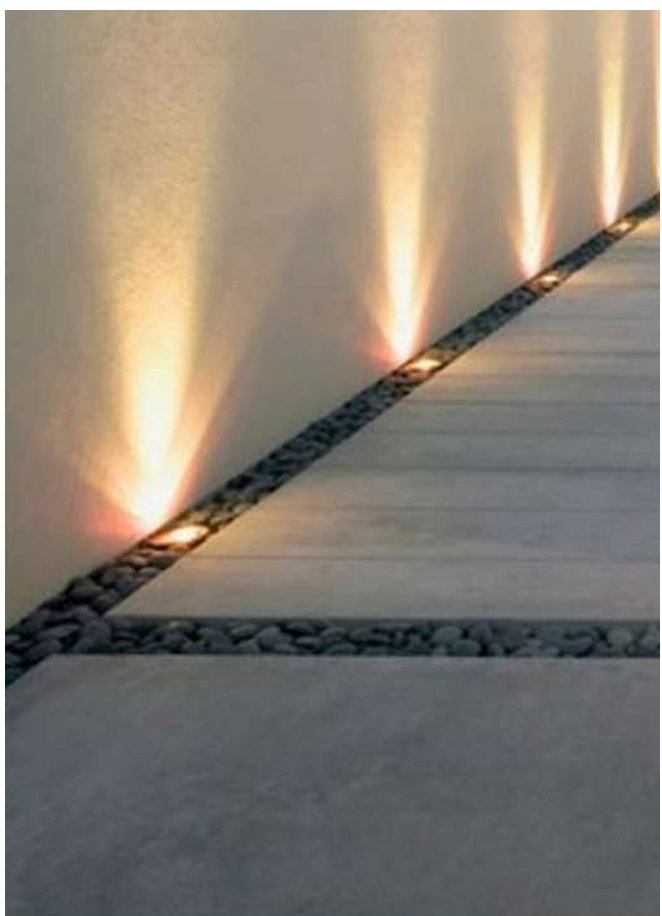
EAST



## CONSERVATION & COMPLIANCE



## INTERPRETATION



## LANDSCAPE PLAN

