

BROOKTON RAILWAY STATION



BACKGROUND

- 1841:** Mail service on Perth-Albany Road.
- 1846:** Seabrook/Robinson families settle in the Brookton district.
- 1869:** Government takes over mail route.
- 1884:** Government enters into contract with Anthony Hordern a NSW Businessman to build the Great Southern Line, Beverley to Albany.
- 1885:** Hordern travels to England and establishes the Western Australian Land Company. Eastern Railway line extended to York.
- 1886:** First section of Great Southern line constructed from York to Beverley.
 - Work begins on construction of Great Southern line, Beverley to Albany.
 - Anthony Hordern dies during return journey to Australia.
- 1889:** Great Southern Line completed.
 - Brookton Siding Gazetted.

- 1890s:** Large numbers of people travel from Albany to the goldfields on the Great Southern line.
 - Old Brookton Station Built. Curved Roof
- 1895:** Town of Seabrook (Brookton) gazetted.
- 1897:** Government purchases Beverley to Albany section of the Great Southern line.

- 1898:** Platelayers cottage built.
- 1899:** Town of Seabrook re-gazetted as Brookton.
- 1900s:** Through passenger traffic reduced with construction of new Fremantle Port facilities, offset by migrants taking up land along the Great Southern route.
- 1915:** Brookton-Corrigin spur line opened.
- 1920s:** Agricultural boom period.
- 1924-26:** New Brookton station building constructed on the site of the existing station building.
 - Cost 3,500 pounds.

- 1924-26:** New Station Building one of WAGR Large Standard Station Buildings. Architectural style described as Interwar Period Standard Railway Design.
 - Staff of 8.
- 1956:** Diesel trains introduced to the State's rail system.
- 1957:** Brookton-Corrigin branch line closed.
- 1961:** Scenicruiser buses introduced to replace alternate day passenger trains.
- 1972:** New CBH facility installed.
 - Stationmaster's house demolished.

- 1978:** Passenger services on Great Southern line end, completely replaced with buses.
- 1984:** Brookton Railway Station closes.
- 1988:** Council leases station building. Management committee appointed.
- 1989:** Station building opens, occupied by Arts & Crafts Centre, Brookton Tourism Association and Anglican Ladies Guild op shop.
- 1996:** Municipal Heritage Inventory prepared.
 - Brookton Railway Station given a Management Category B - Retain + Conserve.
- 2004:** Arts & Crafts Centre, Brookton Tourism Association and Anglican Ladies Group op shop still occupy the railway station.
 - Conservation Management Plan prepared by Laura Gray + Irene Sauman

- c2017:** Beautification project undertaken.
 - Six posts on the east side of the station were found to be extensively decayed with missing ground embedment.
 - Decayed areas were covered with mortar mouldings around the base.
- 2019:** Structural Report for timber posts prepared by RC Consulting Engineer deems Railway Station structurally insufficient and non-compliant.
 - Immediate remediation works are recommended to building.

- 2020:** Brookton Railway Station fenced off and not in use.
- 2021:** Stephen Carrick Architects are approached to develop conceptual designs and cost estimates for the building.



AUGUST 1925 BUILT



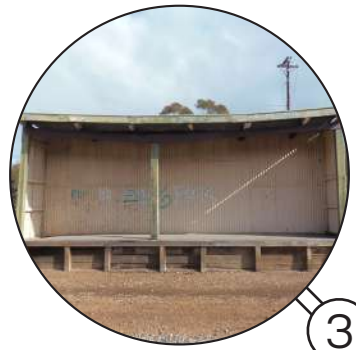
LARGE STANDARD STATION BUILDINGS



①



②



③

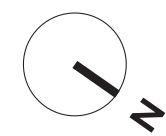


④

ZONES OF SIGNIFICANCE

1:1000
LEGEND:

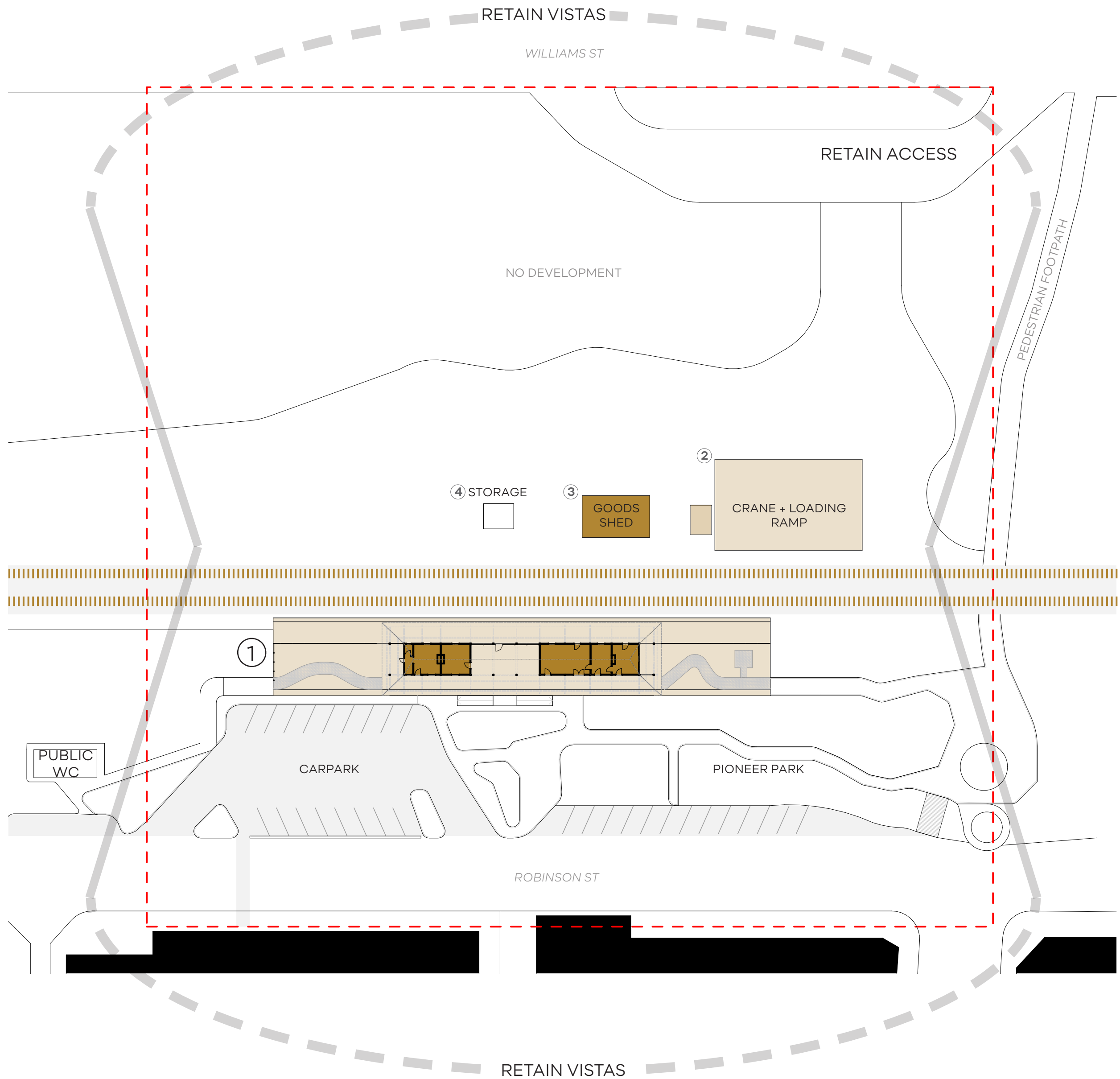
- CURTILAGE
- VISTAS
- SOME SIGNIFICANCE
- LITTLE SIGNIFICANCE
- BUILDINGS
- RAIL CORRIDOR



LOCATION PLAN

1:1000
LEGEND:

- BROOKTON RAILWAY STATION
- OWNED/MANAGED BY THE SHIRE OF BROOKTON
- BUILDINGS
- RAIL CORRIDOR - PUBLIC TRANSPORT AUTHORITY OWNED



BROOKTON RAILWAY STATION



BACKGROUND

STATEMENT OF SIGNIFICANCE

AESTHETIC

LANDMARK PLACE THAT MAKES A SIGNIFICANT CONTRIBUTION TO THE TOWNSCAPE + CHARACTER OF BROOKTON

+

PART OF TOWN'S ORIGINAL BUILDING STOCK

+

POSITIVE CONTRIBUTION TO THE STREETSCAPE

HISTORICAL

WAGR '1925 LARGE STANDARD' STATION BUILDINGS

+

INTEGRAL TO RAILWAY NETWORK THAT WAS LINKED TO BROOKTON

+

PAST TELEGRAPHIC COMMUNICATIONS

+

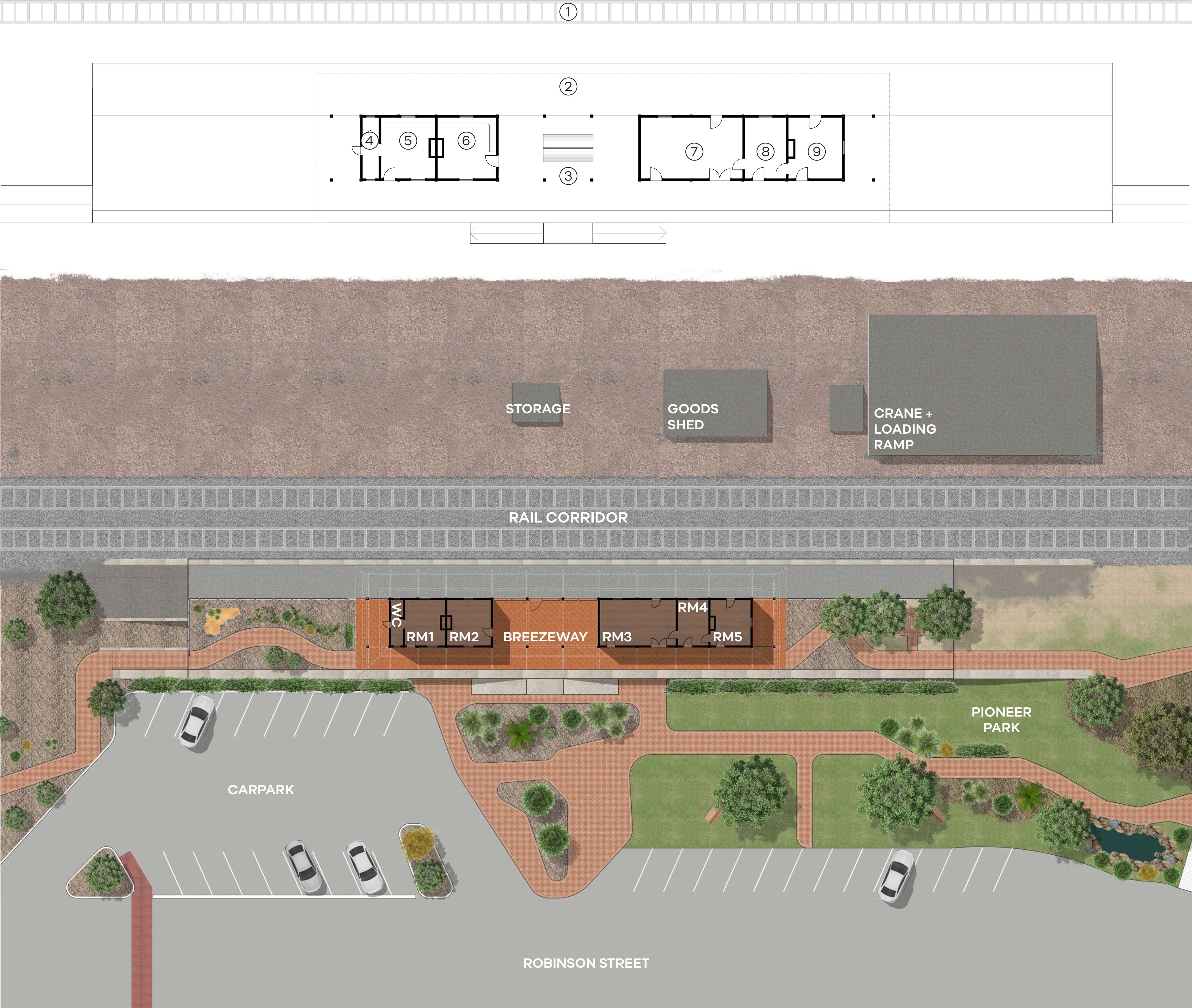
LINK TO PERTH AND THE SOUTH WEST

SOCIAL

DEMONSTRATES FUNCTIONS AND A WAY OF LIFE NO LONGER PRACTICED

+

HIGHLY VALUED BY THE BROOKTON COMMUNITY - REPRESENTS THE SIGNIFICANT RAILWAY PRESENCE IN THE TOWN



1925 PLAN

1:150
LEGEND:

- ① RAIL
- ② PLATFORM
- ③ PLATFORM SEAT
- ④ LAVATORY
- ⑤ LADIES WAITING ROOM
- ⑥ MENS WAITING ROOM
- SEATING
- ⑦ TRAFFIC OFFICE
- ⑧ INSTRUMENT ROOM
- ⑨ STATION MASTERS OFFICE

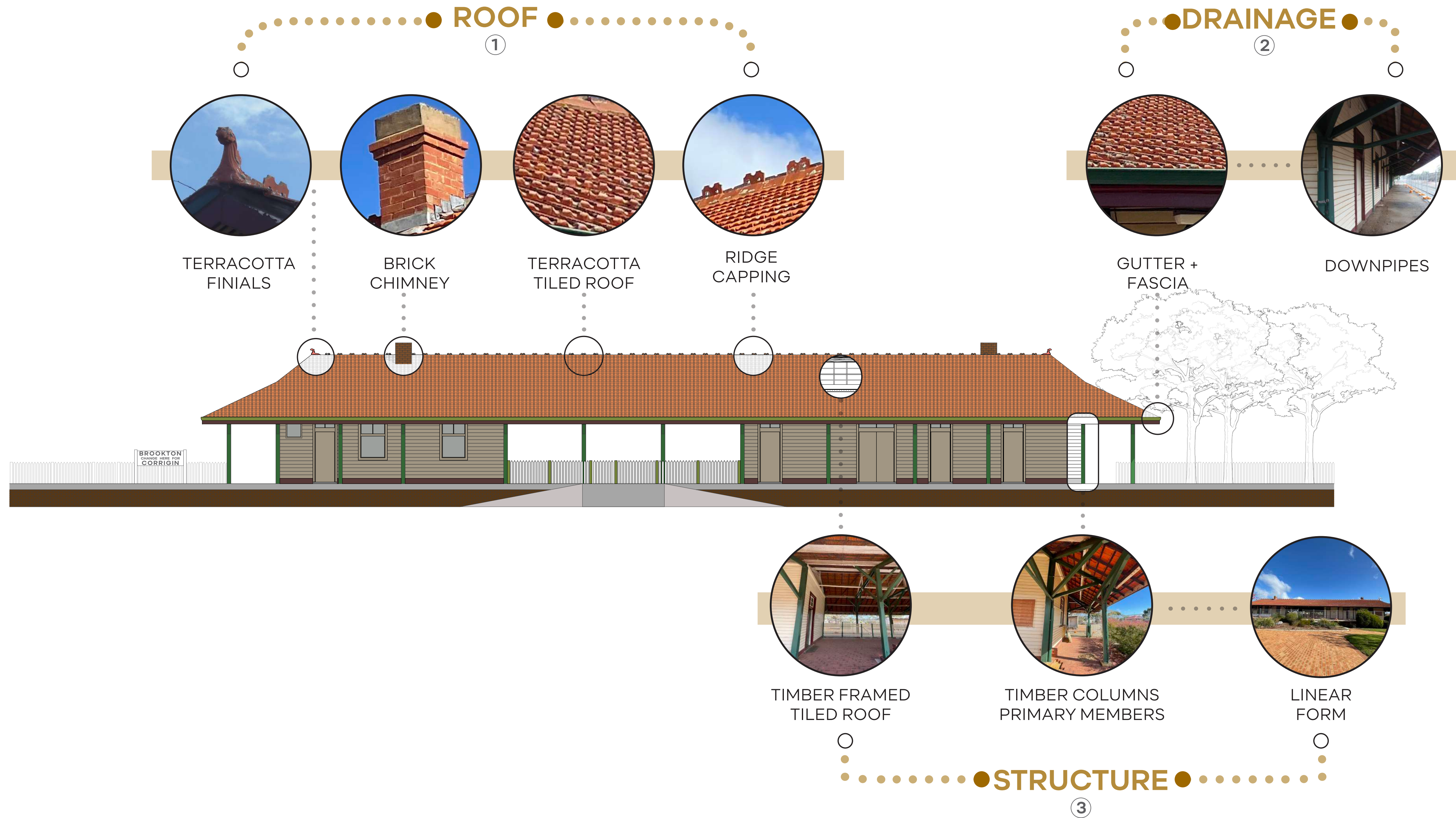
2021 EXISTING SITE PLAN

1:200

BROOKTON RAILWAY STATION



CHARACTERISTICS + ELEMENTS



CONSERVATION ISSUES



1

ROOF

RIDGE DEFLECTION +
MISSING + CRACKED TILES

- TIMBER STRUCTURE REQUIRES
DETAILED INVESTIGATION



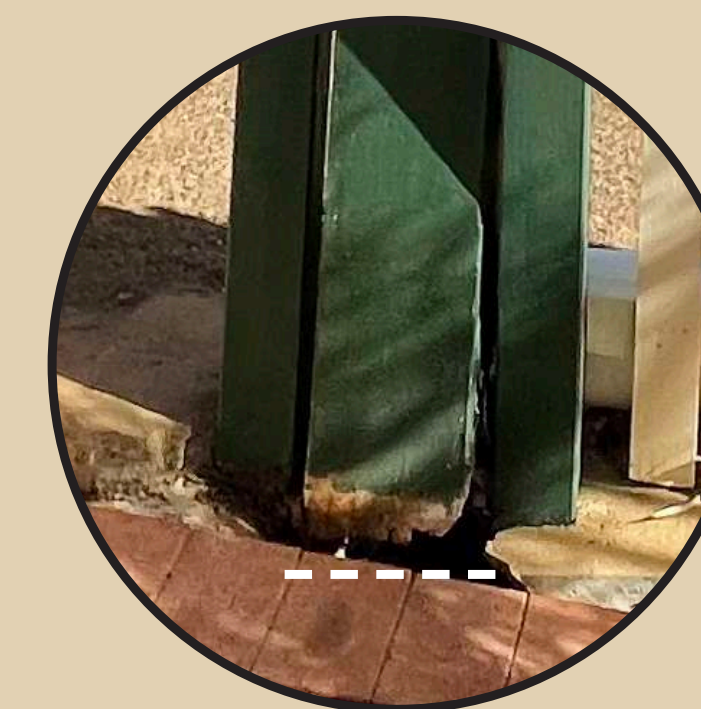
2

DRAINAGE

WATER MANAGEMENT

- INADEQUATE DIVERSION
OFF-SITE

- WATER INGRESS HAS LED TO POST
DECAY



3

STRUCTURE

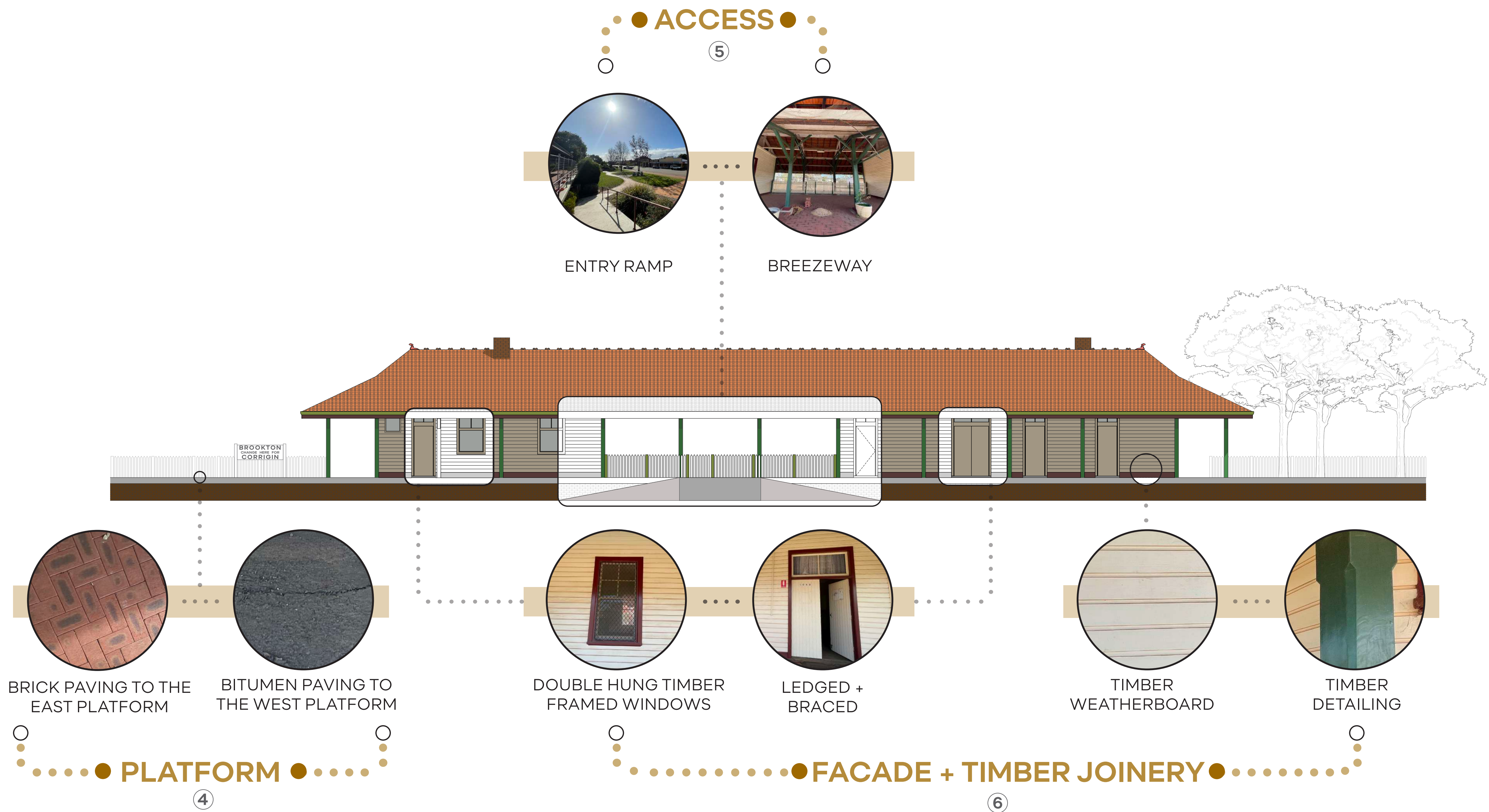
STRUCTURALLY INSUFFICIENT

- POSTS NOT FIT FOR PURPOSE

- NON-COMPLIANT

BROOKTON RAILWAY STATION

CHARACTERISTICS + ELEMENTS



CONSERVATION ISSUES



④ **PLATFORM**
SUBSIDENCE
- DETAILED INVESTIGATION



⑤ **ACCESS**
UNIVERSAL ACCESS
TO THE BUILDING



⑥ **FACADE +
TIMBER JOINERY**
DECAY + TERMITE DAMAGE
- ARCHITRAVES + CHAMFERS +
JOINERY



⑦ **RETAIN +
CONSERVE**
AUTHENTICITY
- BUILDING FABRIC +
CONSTRUCTION DETAILING

BROOKTON RAILWAY STATION



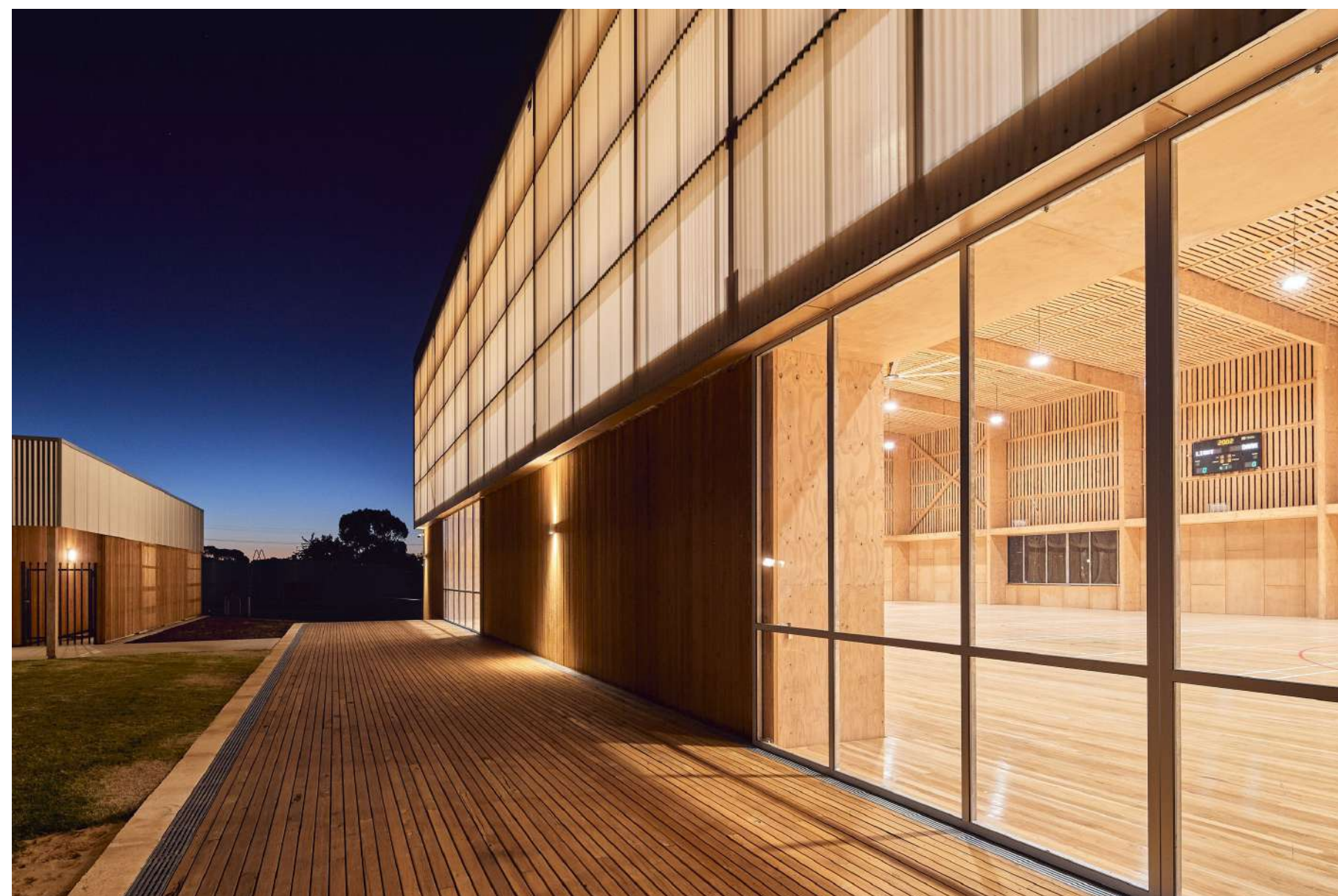
INSPIRATION + PRECEDENTS

COMMUNITY ENGAGEMENT

○ CONSERVATION + REVITALIZE



CONTEMPORARY



MATERIALITY

FLEXIBLE SPACES